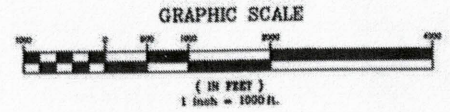
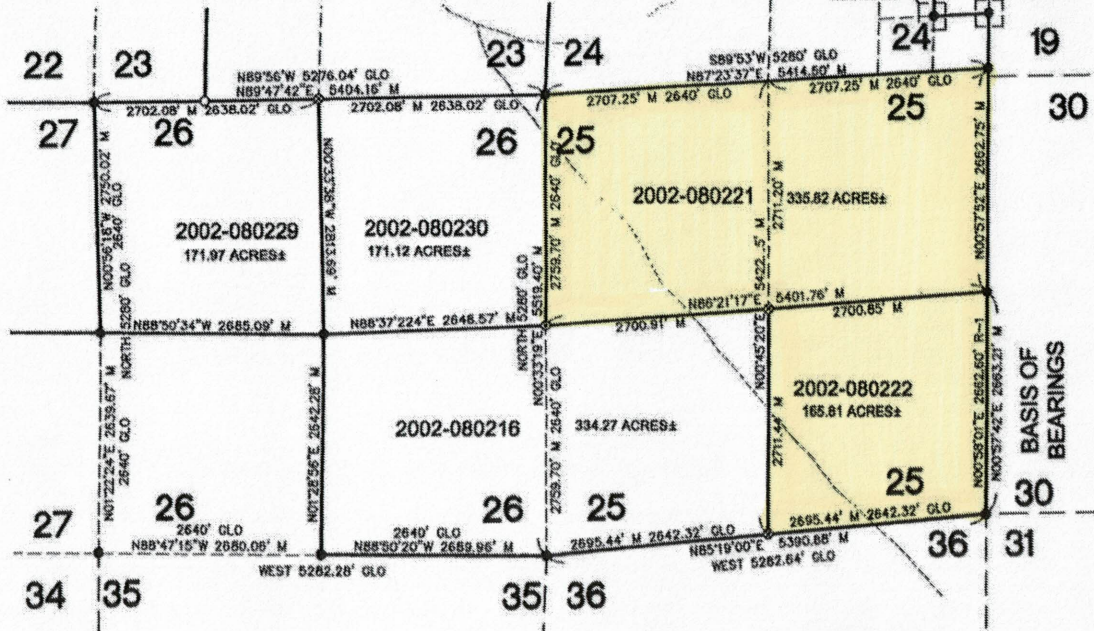


SEE SHEET 5

SEE SHEET 4

DETAIL F
THIS SHEET

DETAIL G
THIS SHEET



RECORD OF SURVEY

OF ALL OR PORTIONS OF SECTIONS 13,
14, 15, 20, 21, 22, 23, 24, 25, 26, 27
AND 28, TOWNSHIP 27 SOUTH, RANGE 17
EAST, M. D. B. & M

SAN LUIS OBISPO COUNTY
STATE OF CALIFORNIA

BASIS OF BEARINGS
THE BASIS OF BEARINGS FOR THIS MAP IS
N00°37'42"E BEING THE EAST LINE OF THE
SOUTHEAST QUARTER OF SECTION 25
(ROTATED 00°00'18" CLOCKWISE FROM
N00°00'01"E) PER 38 RS 30 (R1) BETWEEN
2 FOUND MONUMENTS.



EMK & Associates, Inc.
ENGINEERING • PLANNING • SURVEYING
1005 RAILROAD ST. PASO ROBLES, CA. (805)238-5427