

Surveyor's Notes:

1) The property boundary, distances and areas shown hereon are calculated from record data only and based on a partial field survey. A complete field survey will indicate differences in actual locations.

2) The Basis of Bearings for this survey is the California State Plane Coordinate System, (NAD 83(2011) Epoch 2010.00) Zone 5, US SURVEY FT. ALL DISTANCES SHOWN HEREON ARE GRID. GROUND DISTANCES MAY BE OBTAINED BY MULTIPLYING BY 0.99995491. TO CONVERT FROM DEEDS/GLO TO GRID MULTIPLY GROUND BY 1.00004509. Plane Convergence Angle is -139'54".

3) Building, topographic and improvement locations shown hereon are approximate only and subject to change based on a field survey.

4) USGS Topographic Image is from the USGS Tierra Redonda Mountain 7.5' Quadrangle and is approximate only.

5) The Aerial photography shown hereon was taken from Google Earth, has not been corrected to a true scale and is approximate only.

6) The following easements are unplottable: a.) Utility easement to Pacific Telegraph and Telephone (PT&T) dated January 27, 1965 recorded in Book 1363 of Official Records, at Page 515.

****PRELIMINARY****

Smith Properties

Interlake Road

County of San Luis Obispo, State of California

Legend

- - Indicates found monument as noted
- - Indicates Set 1" Iron Pipe with 1.5" Aluminum Cap "DILGER-PCSD LS 7571"
- R1 - Indicates record data per 9/PM/59 (Stewart)
- R2 - Indicates record data per 12/PM/55 (Stewart)
- R3 - Indicates record data per 5/PM/53 (Stewart)
- R4 - Indicates record data per
- R5 - Indicates record data per
- M - Indicates measured data
- CFR - Indicates "calculated from record"
- SP - Indicates established by Single Proportionate Measurement
- INTX - Indicates established by Intersection
- FD - Found Monument as noted

GRAPHIC SCALE

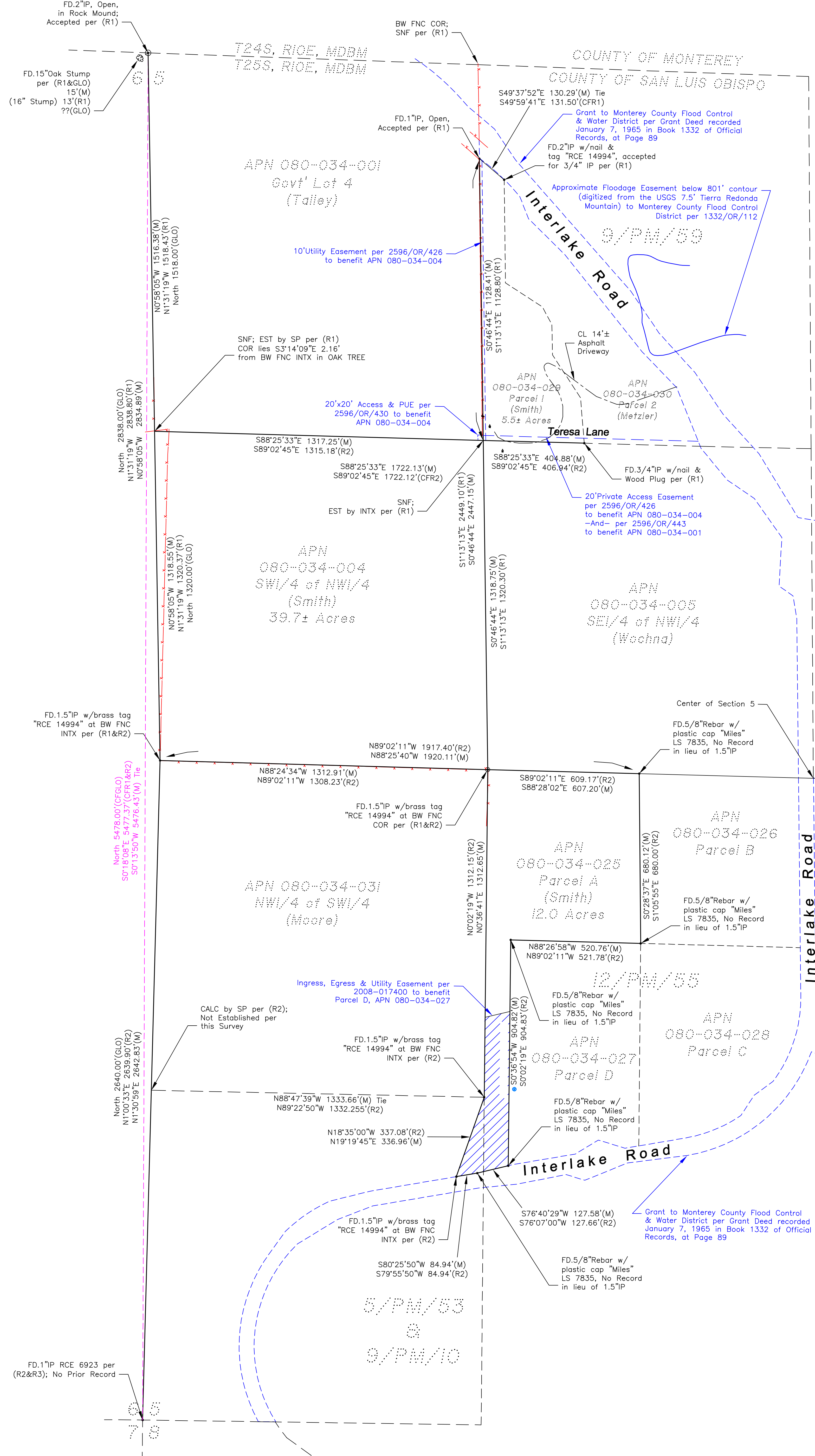
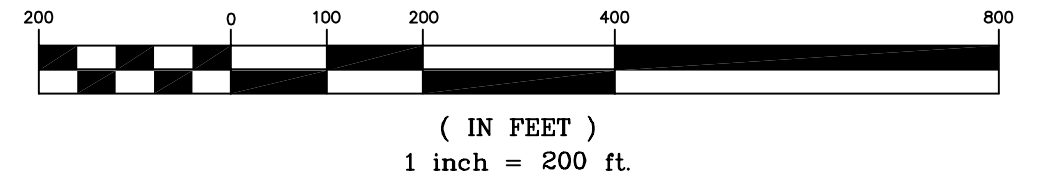


Exhibit Map

of a portion of the west half of Section 5 of Township 25 South, Range 10 East, Mount Diablo Base and Meridian, including Parcel A of the Parcel Map recorded in Book 12 of Parcel Maps, at Page 55 and Parcel 1 of the Parcel Map recorded in Book 9 of Parcel Maps, at Page 59, in the County of San Luis Obispo, State of California.

Prepared for : Mr. Mark Smith
APN# 080-034-004,025 & 029
Site Area = 57.6 Ac.±

****PRELIMINARY****

Pacific Coast Survey & Design Group, Inc.

935 Riverside Avenue #10
Paso Robles, California 93446
(805) 238-9881 www.pcsdgroup.com

Project File : \\15015.dwg
Last Revised 18 JAN 16

FOR REDUCED PLANS
ORIGINAL SCALE IS IN INCHES

