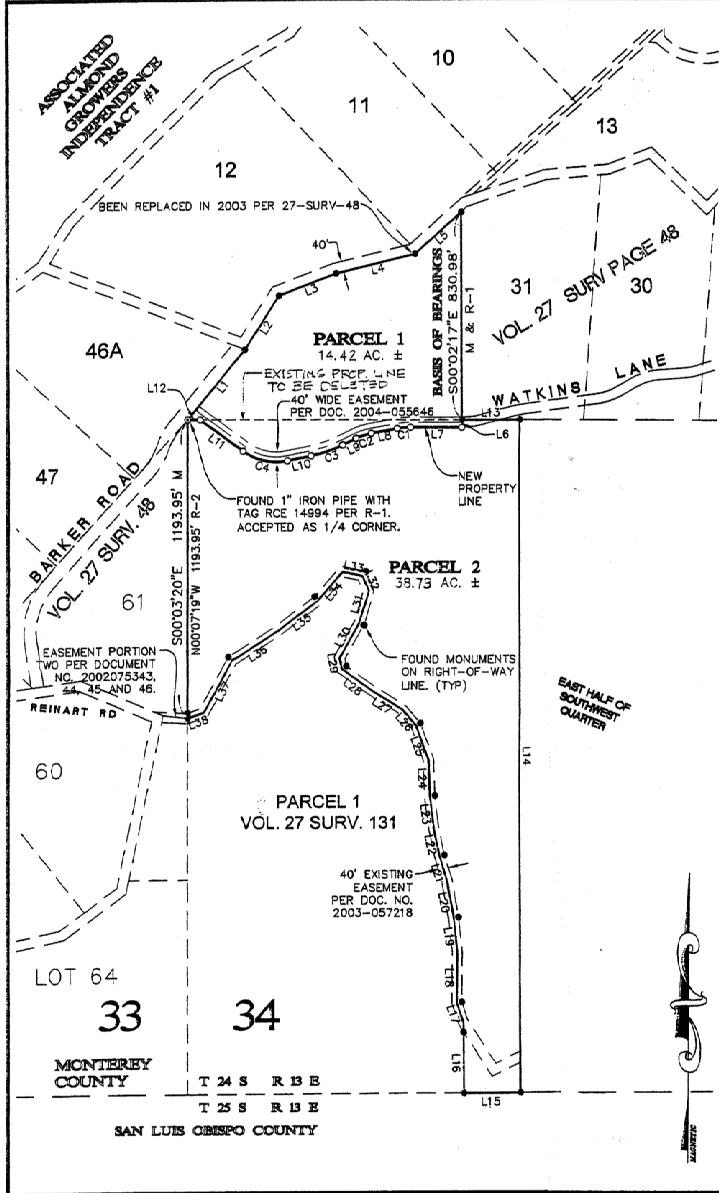


VOL 50 JULY 19 88



LEGEND

- FOUND 1/2" REBAR LS5145 PER R-1 OR R-2
- SET 1/2" REBAR WITH TAG LS 5145
- ⊙ FOUND MONUMENT AS NOTED
- M MEASURED
- R-1 VOL. 27 SURV. P. 48
- R-2 VOL. 27 SURV. P. 131

BASIS OF BEARINGS

THE BASIS OF BEARINGS FOR THIS MAP IS N00°02'17"W BEING THE EAST LINE OF LOT 32 PER VOL. 27 SURV. 48 BETWEEN TWO FOUND MONUMENTS AS SHOWN HEREON.

NOTES

1. DISTANCES IN FEET AND DECIMALS THEREOF.

LINE	BEARING(M & R-1)	LENGTH(M & R-1)
L1	S38°57'21"W	337.75'
L2	S32°40'02"W	235.89'
L3	S98°42'26"W	242.29'
L4	S78°09'09"W	322.08'
L5	S47°43'13"W	248.03'
L6	S00°02'17"E M	29.56' M

LINE	BEARING(M)	LENGTH(M)	BEARING(R-2)	LENGTH(R-2)
L13	N89°42'33"W	230.18'	NO RECORD	NO RECORD
L14	S00°07'41"E	2888.56'	N00°11'40"W	2888.56'
L15	N89°47'31"E	223.72'	N88°43'32"E	223.72'
L16	S00°25'17"E	279.93'	S00°28'16"E	279.93'
L17	S18°14'27"E	85.04'	S18°18'28"E	85.04'
L18	S00°30'27"W	202.71'	S00°26'28"W	202.71'
L19	S06°20'28"E	135.73'	S06°24'25"E	135.73'
L20	S09°51'32"E	153.39'	S09°55'31"E	153.39'
L21	S18°42'36"E	99.05'	S18°46'35"E	99.05'
L22	S11°48'04"E	114.28'	S11°52'04"E	114.28'
L23	S06°44'16"E	132.35'	S06°48'15"E	132.35'
L24	S02°11'27"E	146.97'	S02°15'28"E	146.97'
L25	S19°43'22"E	146.07'	S19°47'21"E	146.07'
L26	S40°30'11"E	83.43'	S40°34'10"E	83.43'
L27	S58°14'51"E	150.67'	S58°18'50"E	150.67'
L28	S53°45'03"E	143.51'	S53°49'02"E	143.51'
L29	S09°36'44"E	45.77'	S09°40'43"E	45.77'
L30	S29°04'57"W	157.73'	S29°00'58"W	157.73'
L31	S16°13'25"W	134.63'	S16°09'26"W	134.63'
L32	S24°04'11"E	64.14'	S24°08'10"E	64.14'
L33	S77°53'41"E	79.94'	S77°57'40"E	79.94'
L34	N39°52'56"E	147.39'	N39°48'67"E	147.39'
L35	N52°48'29"E	200.13'	N52°44'30"E	200.13'
L36	N58°53'13"E	216.16'	N58°49'14"E	216.16'
L37	N28°01'00"E	235.56'	N27°57'00"E	235.56'
L38	N69°53'25"E	89.56'	N69°49'28"E	89.56'

NEW PARCEL LINE TABLE

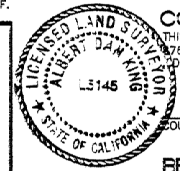
LINE	BEARING	LENGTH(M)
L7	S89°35'51"E	203.04'
L8	N79°33'02"E	104.29'
L9	N63°37'21"E	59.08'
L10	N78°11'38"E	95.64'
L11	S53°09'58"E	211.46'
L12	S86°42'33"E	49.33'

CURVE TABLE

CURVE	DELTA	LENGTH	RADIUS
C1	10°51'07"	53.03'	280.00'
C2	15°55'41"	63.84'	230.00'
C3	14°34'18"	132.25'	520.00'
C4	48°58'24"	186.76'	220.00'

SURVEYOR'S STATEMENT
 THIS MAP CORRECTLY REPRESENTS A SURVEY MADE BY ME OR UNDER MY DIRECTION IN CONFORMANCE WITH THE REQUIREMENTS OF THE PROFESSIONAL LAND SURVEYORS ACT AT THE REQUEST OF JOEL COX IN MARCH 2009.

Albert Dan King 6-11-09 DATE
 ALBERT DAN KING LS 5145
 LICENSE EXP. 6-30-2009



COUNTY SURVEYOR'S STATEMENT
 THIS MAP HAS BEEN EXAMINED IN ACCORDANCE WITH SECTION 8786 OF THE PROFESSIONAL LAND SURVEYORS ACT THIS 22 DAY OF July, 2009.

John Cook
 COUNTY SURVEYOR, MONTEREY COUNTY



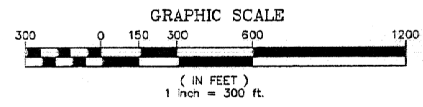
RECORDER'S STATEMENT

FILED THIS 22 DAY OF July, 2009 AT
 2:00 P.M. IN VOLUME 30 OF
 RECORDS OF SURVEYS, AT PAGE 93, AT THE REQUEST

OF ALBERT DAN KING, LS 5145.

DOCUMENT NO. *070239* FEE: \$ *9.00*

Stephen L. Vainini
 COUNTY RECORDER
John M. Rano
 DEPUTY RECORDER



**PLN 070239
 RECORD OF SURVEY**

BEING AN ADJUSTMENT OF THE LINES BETWEEN LOT 32 OF THE ASSOCIATED ALMOND GROWERS INDEPENDENCE TRACT NO. 1 (VOL. 2, MAPS & GRANTS, PAGE 18 AND VOL. 27 PG. 48 OF SURVEYS) AND PARCEL 2 OF VOL. 27 PG. 131 OF SURVEYS

PORTION OF SECTION 34
 TOWNSHIP 24 SOUTH RANGE 13 EAST
 MONTEREY COUNTY
 CALIFORNIA

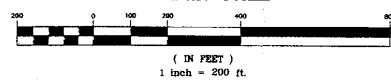
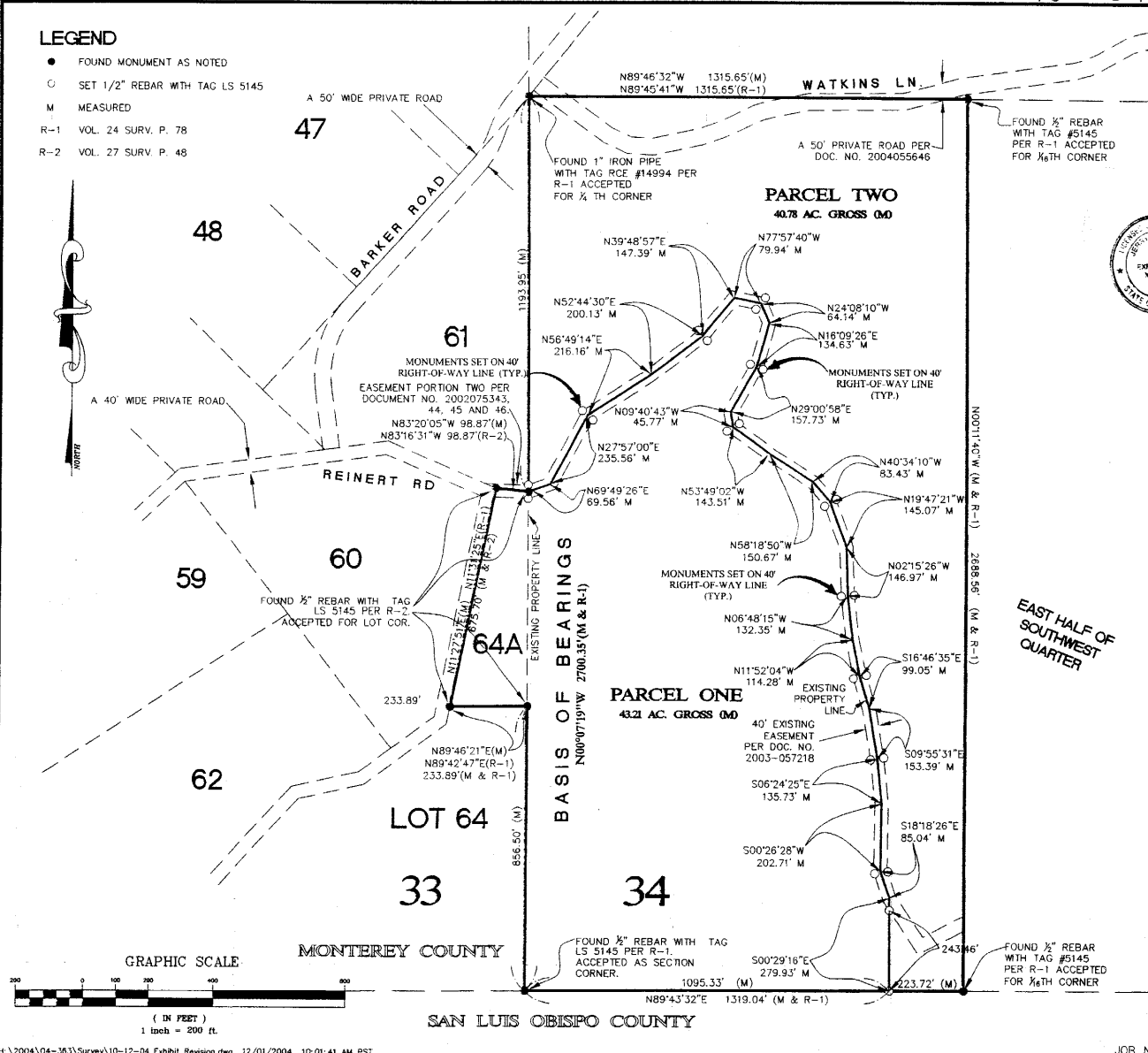


EMK & Associates, Inc.
 ENGINEERING • PLANNING • SURVEYING
 1005 RAILROAD ST. PASO ROBLES, CA. (805)238-5427

102-27-SURV. RE 131

LEGEND

- FOUND MONUMENT AS NOTED
- SET 1/2" REBAR WITH TAG LS 5145
- M MEASURED
- R-1 VOL. 24 SURV. P. 78
- R-2 VOL. 27 SURV. P. 48



SURVEYOR'S STATEMENT

THIS MAP CORRECTLY REPRESENTS A SURVEY MADE BY ME OR UNDER MY DIRECTION IN CONFORMANCE WITH THE REQUIREMENTS OF THE PROFESSIONAL LAND SURVEYORS ACT AT THE REQUEST OF KARL WITSTROM IN OCTOBER, 2004.

Albert Dan King 12-2-2004
ALBERT DAN KING LS 5145 DATE
LICENSE EXP. 6-30-2007

COUNTY SURVEYOR'S STATEMENT

THIS MAP HAS BEEN EXAMINED IN ACCORDANCE WITH SECTION 8766 OF THE PROFESSIONAL LAND SURVEYORS ACT THIS DAY OF DECEMBER, 2004.



BY: *Jerry L. Combs* 12-2-04 DATE
DEPUTY COUNTY SURVEYOR, MONTEREY COUNTY
JERRY L. COMBS, L.S. #7544

BASIS OF BEARINGS

THE BASIS OF BEARINGS FOR THIS MAP IS N00°07'19"W BEING THE WEST LINE OF THE SOUTHWEST QUARTER OF SECTION 34, T 24 S R 13 E, PER VOLUME 24 PAGE 78 OF SURVEYS, BETWEEN TWO FOUND MONUMENTS.

NOTE

DISTANCES ARE EXPRESSED IN FEET AND DECIMALS THEREOF.

RECORDER'S STATEMENT

FILED THIS 23RD DAY OF DECEMBER, 2004 AT 1:39 P. M., IN VOLUME 27 OF RECORDS OF SURVEYS, AT PAGE 131, AT THE REQUEST OF ALBERT DAN KING, LS 5145.
DOCUMENT NO. 2004136120
FEE: \$ 7.00

Stephen L. Vagnini
COUNTY RECORDER
Rita Indria
DEPUTY RECORDER

RECORD OF SURVEY

OF LOT LINE ADJUSTMENT (FILE #PLN040195) BEING AN ADJUSTMENT BETWEEN THE WEST HALF OF THE SOUTHWEST QUARTER OF SECTION 34, TOWNSHIP 24 SOUTH RANGE 13 EAST, M.D.B.M. AND LOT #64A OF ASSOCIATED ALMOND GROWERS INDEPENDENCE TRACT NO. 1 PER VOL. 2, MAPS & GRANTS, PAGE 18.

COUNTY OF MONTEREY
STATE OF CALIFORNIA



EMK & Associates, Inc.
ENGINEERING • PLANNING • SURVEYING
1005 RAILROAD ST. PASO ROBLES, CA. (805)238-5427

lot 63 blk 404 A 424-40
lot 23 blk 151 A 424-15

Description: CA Monterey Record of Survey - Book Page 27.131 Page 1 of 1

LEGEND

- FOUND MONUMENT AS NOTED
- SET 1/2" REBAR WITH TAG LS 5145
- M MEASURED
- GLO-1 GENERAL LAND OFFICE SURVEY NOTES- FREEMAN '855
- GLO-2 GENERAL LAND OFFICE SURVEY NOTES- WARD 1869
- X-X- EXISTING OLD FENCE LINE

NOTE

DISTANCES ARE EXPRESSED IN FEET AND DECIMALS THEREOF.

BASIS OF BEARINGS

THE BASIS OF BEARINGS FOR THIS MAP IS EAST BEING THE NORTH LINE OF SECTION 1, T 25 S - R 13 E, PER GLO-1.



SURVEYOR'S STATEMENT

THIS MAP CORRECTLY REPRESENTS A SURVEY MADE BY ME OR UNDER MY DIRECTION IN CONFORMANCE WITH THE REQUIREMENTS OF THE LAND SURVEYORS ACT AT THE REQUEST OF JOHN KING IN FEBRUARY 2001.

Albert Dan King
 ALBERT DAN KING LS 5145
 LICENSE EXP. 6-30-2003
 DATE 4-17-01

COUNTY SURVEYOR'S STATEMENT

THIS MAP HAS BEEN EXAMINED IN ACCORDANCE WITH SECTION 8756 OF THE LAND SURVEYOR'S ACT THIS 24th DAY OF APRIL 2001.

Michael K. Welch
 DEPUTY COUNTY SURVEYOR, MONTEREY COUNTY
 MICHAEL K. WELCH, LS 3485

RECORDER'S STATEMENT

FILED THIS 26th DAY OF APRIL, 2001 AT 2:43 P. M., IN VOLUME 24 OF RECORDS OF SURVEYS, AT PAGE 78, AT THE REQUEST OF ALBERT DAN KING, LS 5145.
 DOCUMENT NO. 2001032312
 FEE: 17.00

Joseph E. Pita
 COUNTY RECORDER
Debra J. Umritt
 DEPUTY RECORDER
 Doc# 2001032312

RECORD OF SURVEY

OF THE EAST HALF AND THE WEST HALF OF THE SOUTHWEST QUARTER OF SECTION 34 TOWNSHIP 24 SOUTH RANGE 13 EAST MDB&M

COUNTY OF MONTEREY
 STATE OF CALIFORNIA



EMK & Associates, Inc.

ENGINEERING • PLANNING • SURVEYING
 1005 RAILROAD ST. PASO ROBLES, CA. (805)238-5427



GRAPHIC SCALE

