

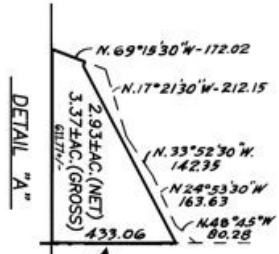
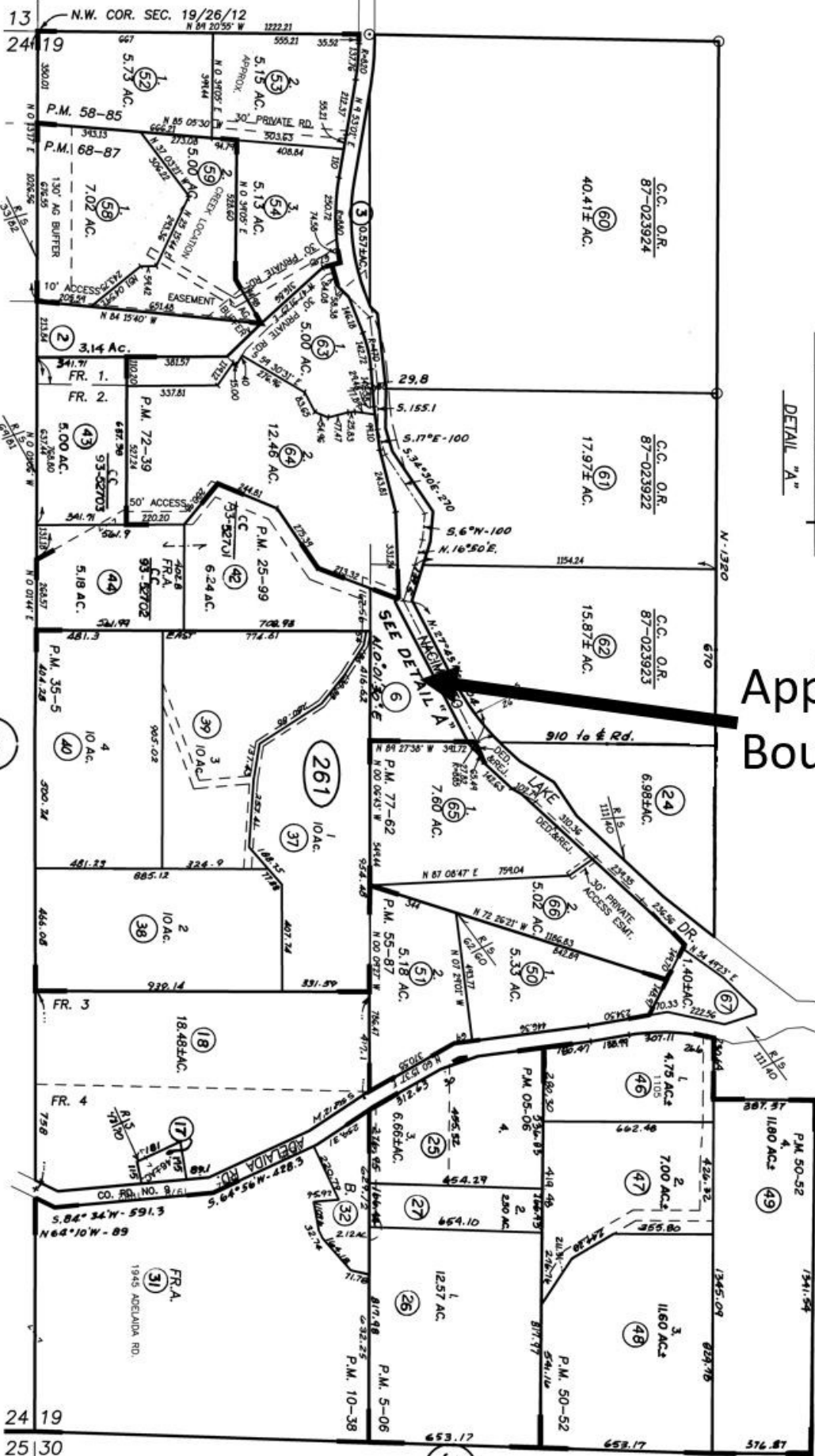
REVISIONS	DATE
04-225	12-04-03
07-222	10-28-06
08-098	08-12-07
09-260	01-22-09
10-008	03-31-09
13-182	03-17-13
17-084	11-01-18

200' 0 400' 800'

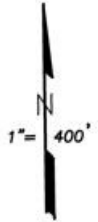
3V THIS MAP IS PREPARED FOR ASSESSMENT PURPOSES ONLY.

T. 26S.; R. 12E.; SECTION 19 (PTN.). M.D.B. & M.

ASSESSOR'S MAP COUNTY OF SAN LUIS OBISPO, CA. BOOK 026 PAGE 26



Approx. Boundaries



026-261